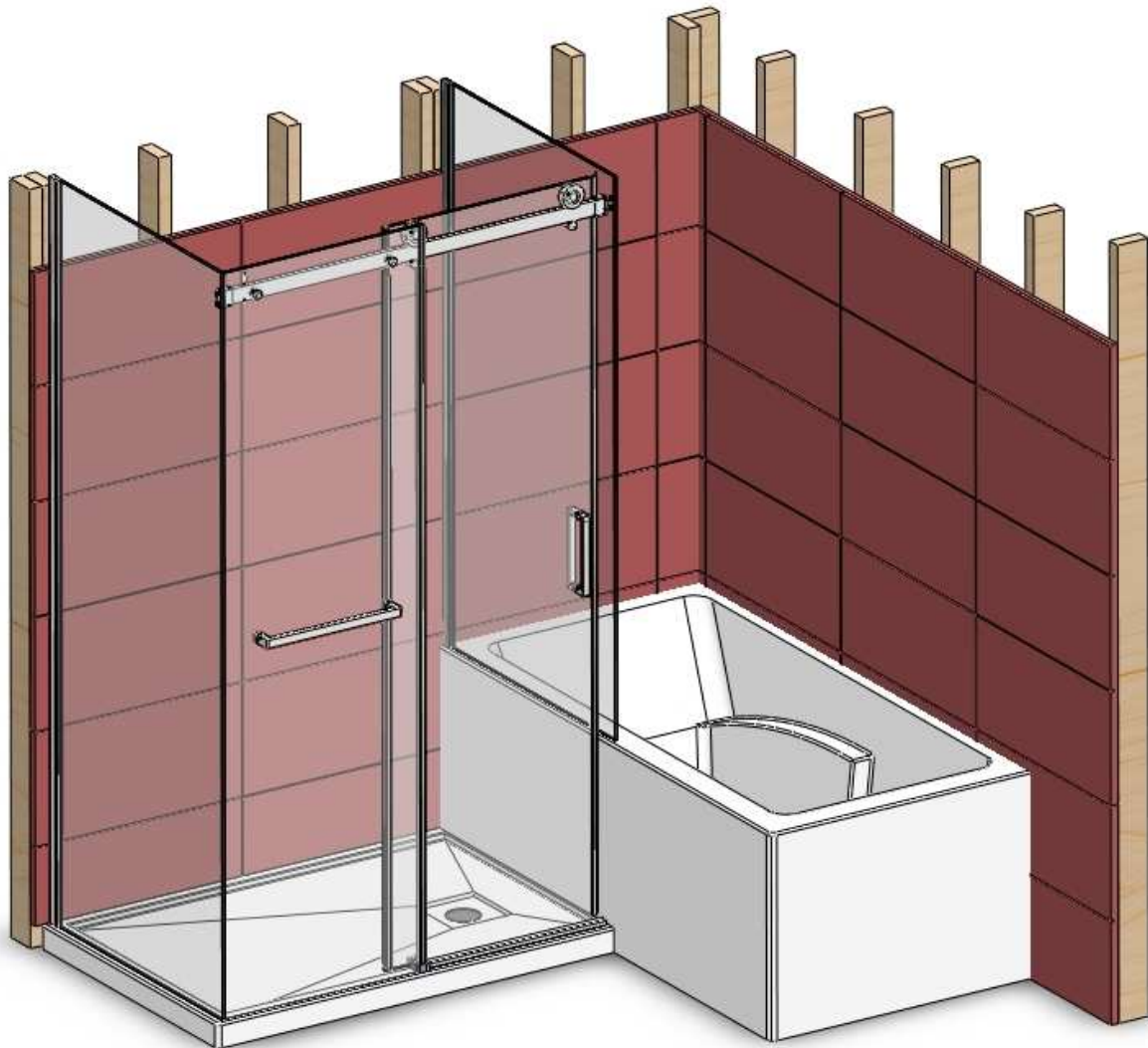


oceania

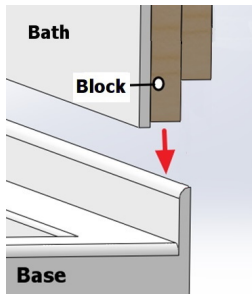
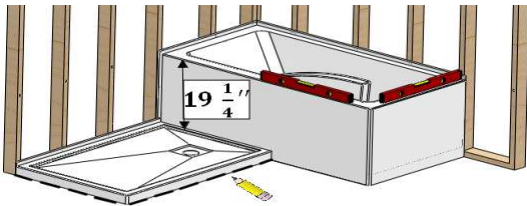
water • attitude

Installation Instruction for Optimale Series

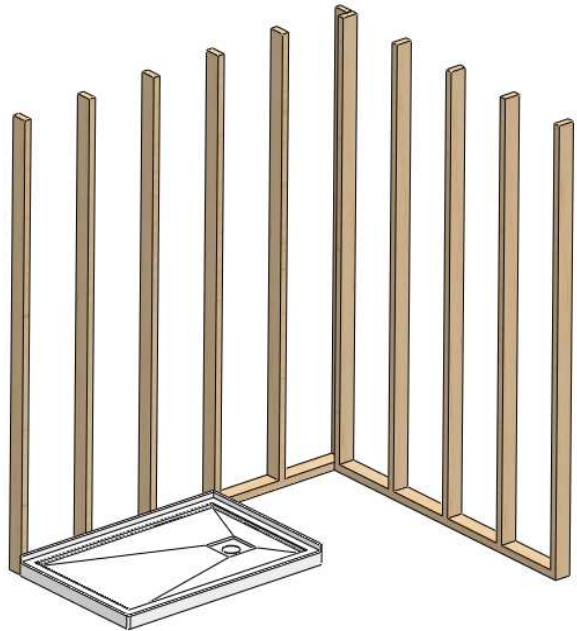
Side Mounting (MC)



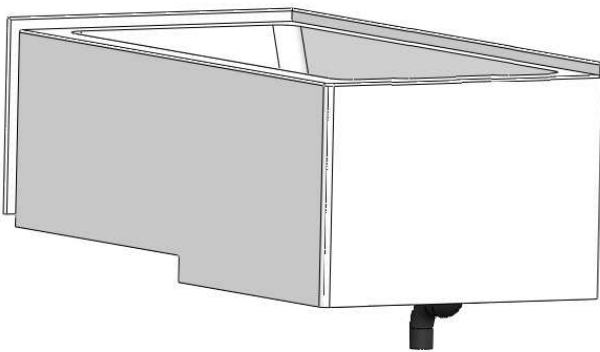
1. Place the bathtub and the base in their final position. Adjust the legs of the bathtub so that they support the tub. Make sure that the tiling flange of the base is well inserted immediately behind the block. The top of the bathtub must be levelled on both sides, and must be at 19 1/4" distance from the top of the base. Mark the position of the base.



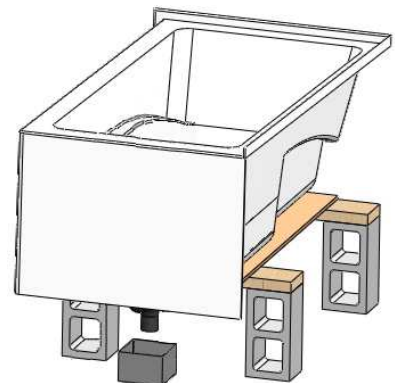
2. Remove the bathtub and install the base as described in the Installation Manual provided with the base.



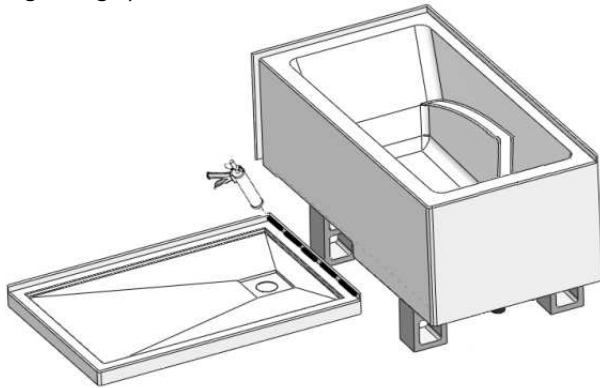
3. Install the faucets, the drain and the overflow. Please note that the faucets can be wall or floor mounted. Use flexible hoses for hot/cold water supply. Connect the bath drain into the floor drain without any glue to make sure the installation is appropriate.



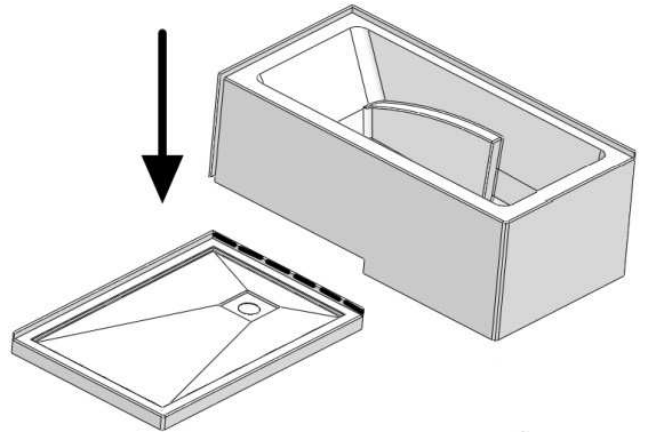
4. Place the bathtub on blocks above its final position. Make required connections (hot/cold water, chromotherapy light, keypad, water detector, blower). The blower can be relocated away from its position inside the skirt, to allow an easy access. Test water supply connections and test drain to make sure there is no leakage. After testing, use a small container to collect water under the bath.



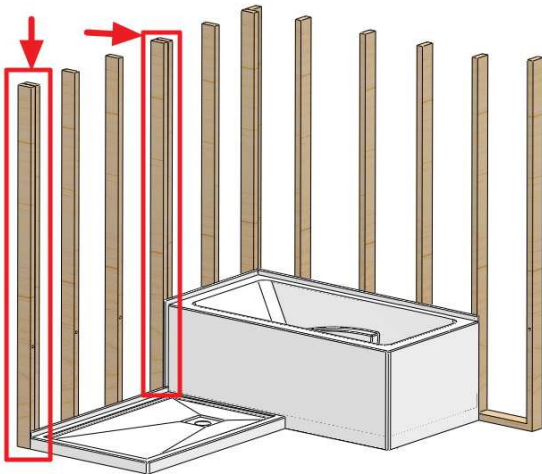
5. Apply a generous line of silicone on the side of the base where it comes into contact with the bathtub (along the tiling flange).



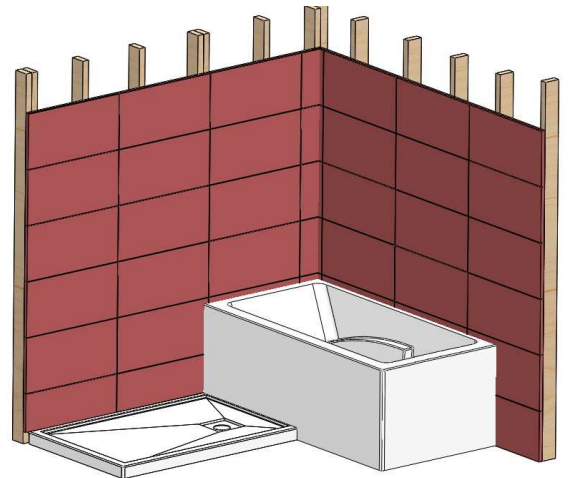
6. Remove the blocks and place the bathtub in its final position, and connect the drain.



7. Make sure there are 2 studs in the following locations (one at the end of the base, the other next to the bathtub's side).



8. Proceed with the installation of the drywall and the ceramic.



9. Door Installation:

To install a **sliding door (Marelia)**, follow instructions:
Linear Mounting + Marelia door.

To install a **hinged door (California)**, follow instructions:
Linear Mounting + California door.

Installation Instructions for Access Panels

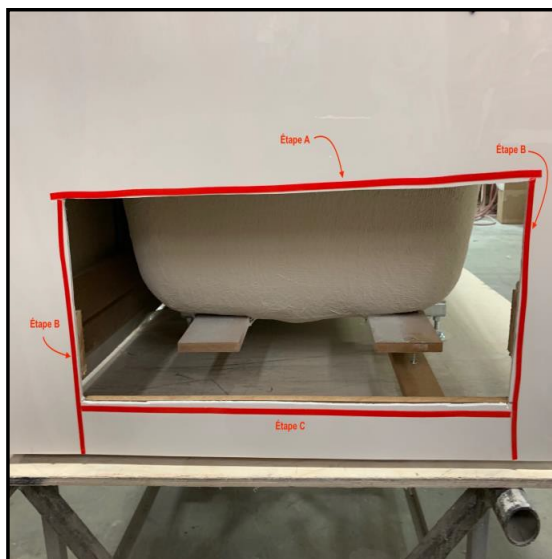
A) Clean all around the opening using a soft cloth and wood alcohol.



B) Clean all around the inner perimeter of the access panel, using wood alcohol.



Step 2



A) Install the double-sided tape horizontally over the opening. Do not exceed more than $\frac{3}{4}$ " on each side.

B) Install the double-sided tape vertically, on each side of the opening, starting up and going down, without overlapping the joints.

C) Install the double-sided tape horizontally, below the opening, without overlapping the joints.

D) Press firmly all over the tape.

Step 3

A) Remove the protective film on the double-sided tape.



Step 4

A) Apply silicone in the groove of the access panel.



Step 5

A) Align the access panel with the side of the bathtub and press firmly.

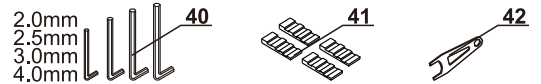
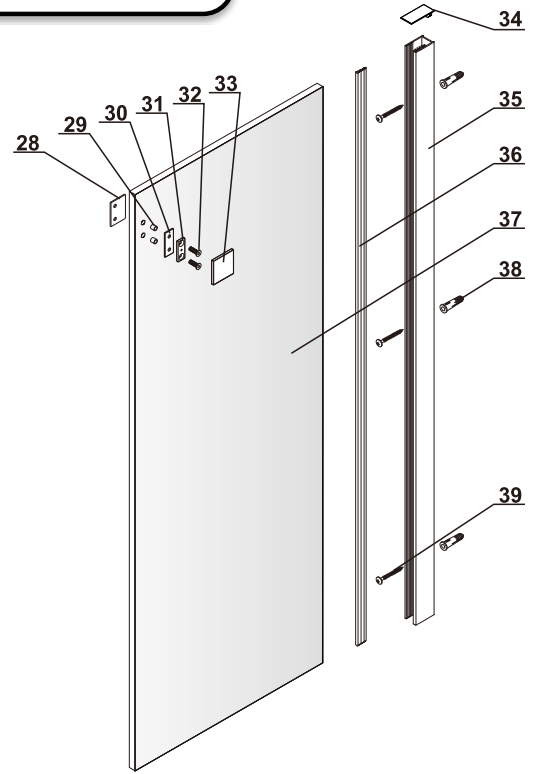
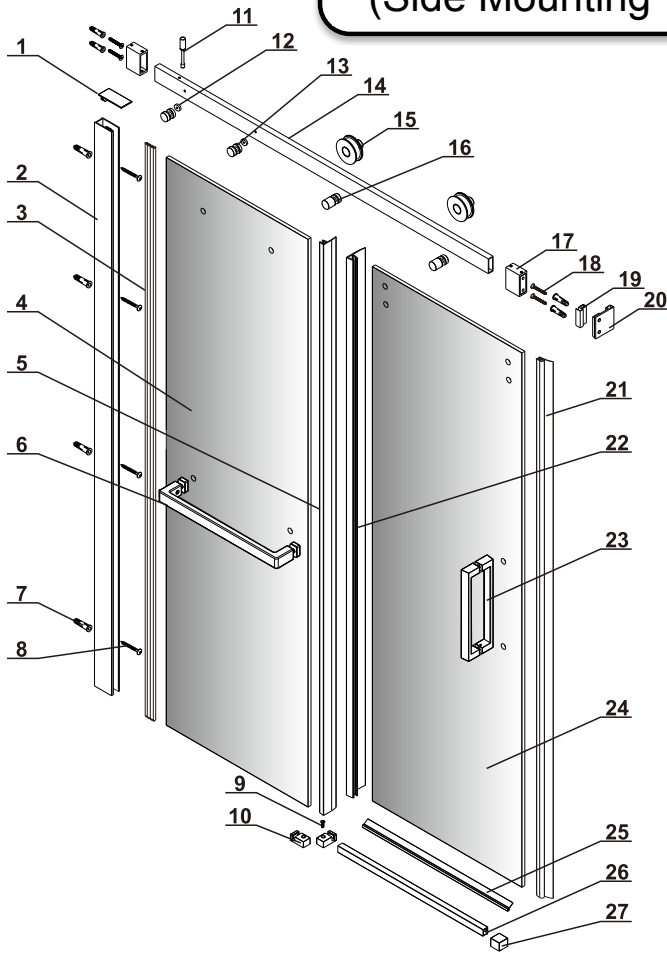


Step 6

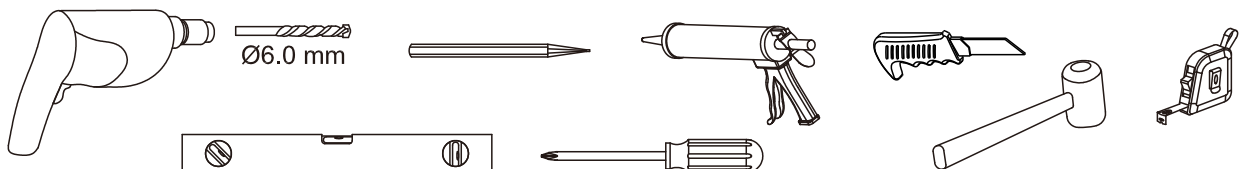
A) Clean the excess of silicone and apply one last line of silicone on top, and on each side of the access panel. Let cure for 24 h before use.

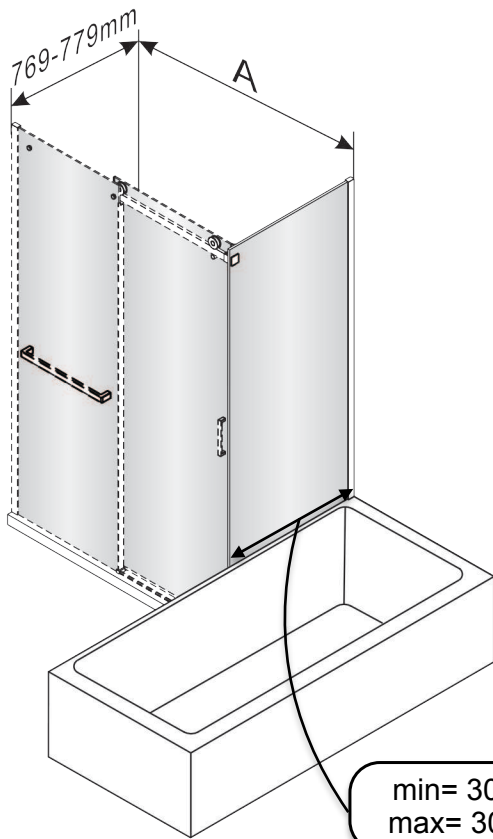


Montage de Côté + Porte Marelia (Side Mounting + Marelia door)



1 1X 	2 1X 	3 1X 	4 1X 	5 1X 	6 1X 	7 8X 	8 4X ST 4X40
9 1X ST 4X25 	10 2X 	11 1X 	12 2X 	13 2X 	14 1X 	15 2X 	16 2X
17 2X 	18 4X ST 4X40 	19 1X 	20 1X 	21 1X 	22 1X 	23 1X 	24 1X
25 1X 	26 1X 	27 1X 	28 1X 	29 2X 	30 1X 	31 1X 	32 2X M5X25
33 1X 	34 1X 	35 1X 	36 1X 	37 1X 	38 3X 	39 3X ST 4X40 	40 4X
41 4X 	42 1X 						

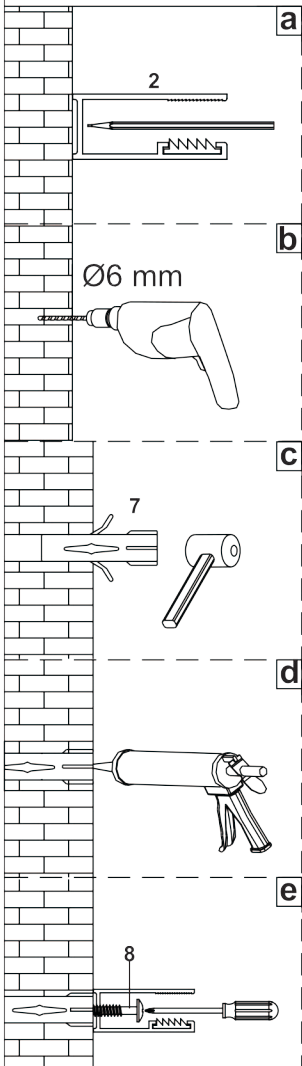




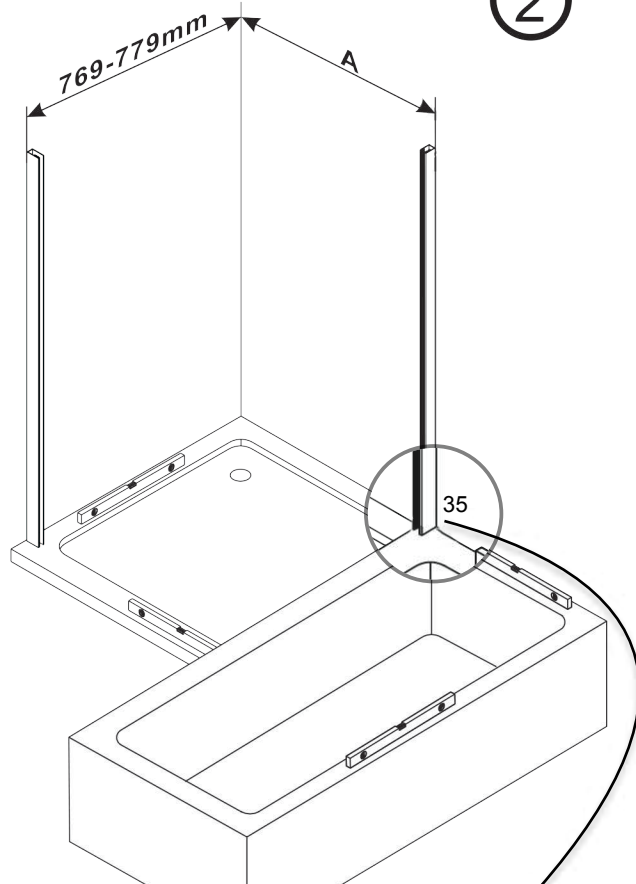
1

model	A (mm)		A (")	
	min	max	min	max
48"	1168	1188	46	46 3/4
60"	1473	1493	58	58 3/4

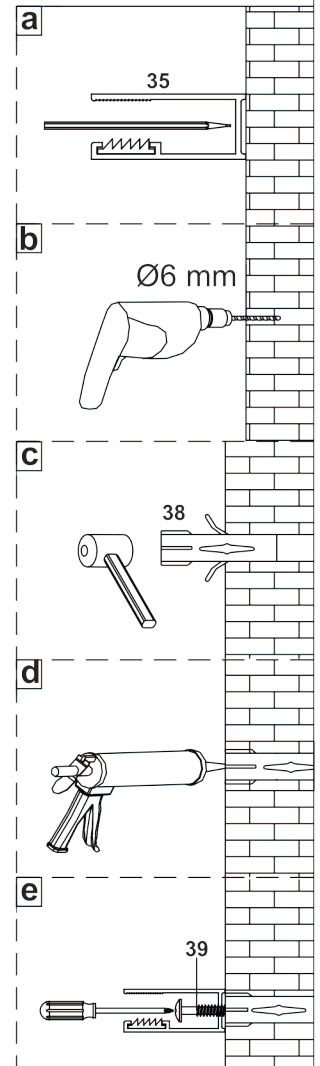
min= 30 1/4" (769mm)
max= 30 5/8" (779mm)

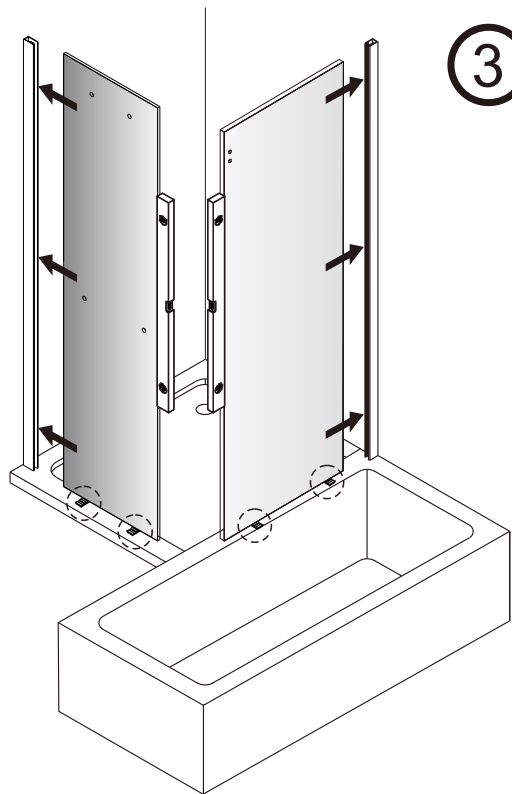
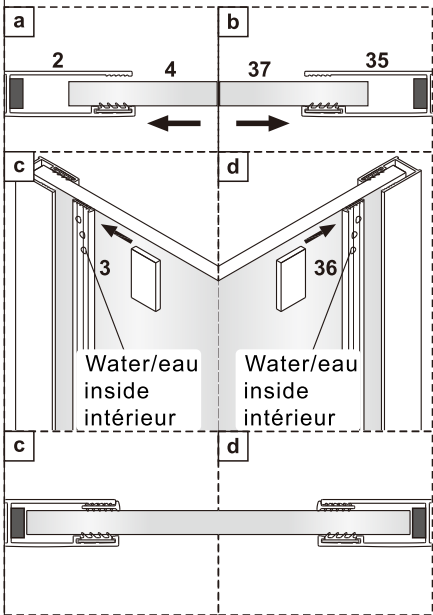


2



#35 doit être positionné égal à la jupe du bain
#35 must be flush with the bath skirt

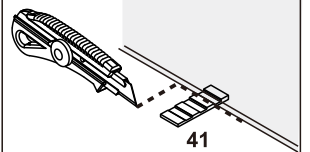
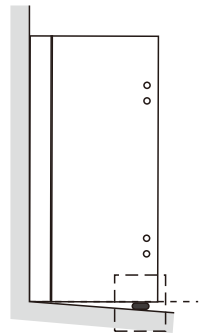




3

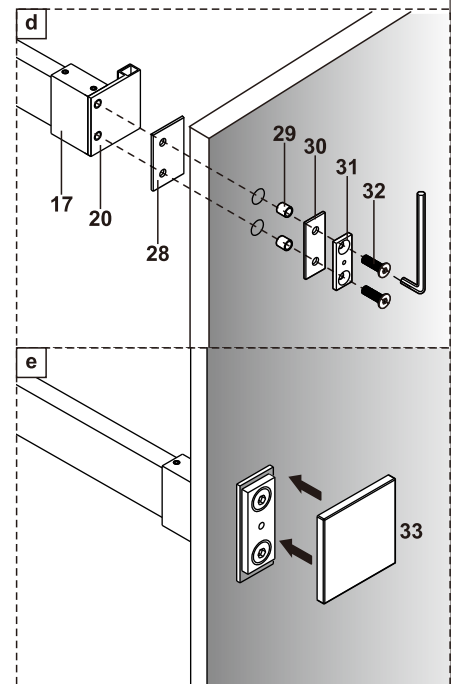
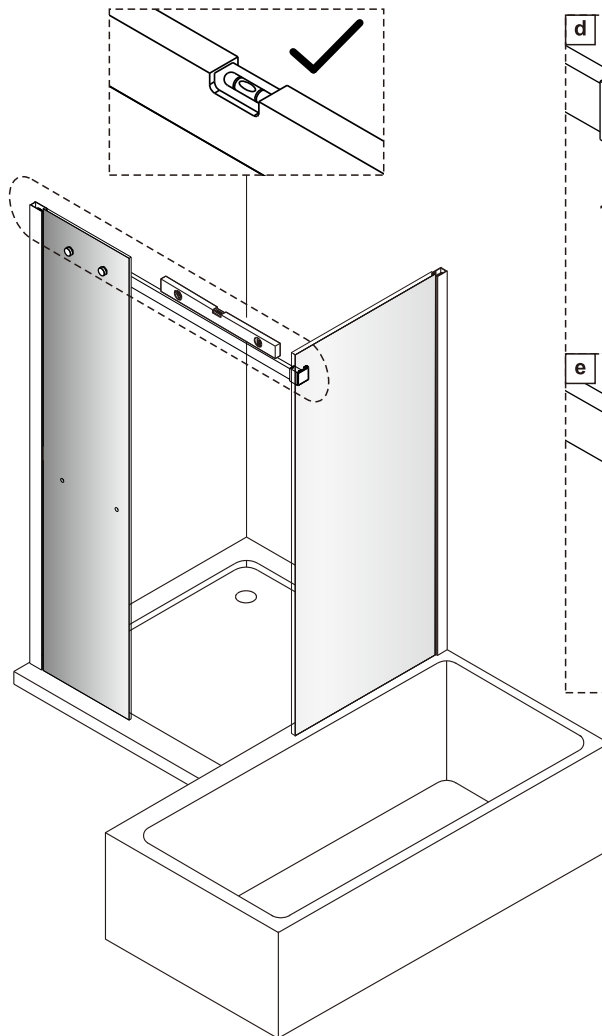
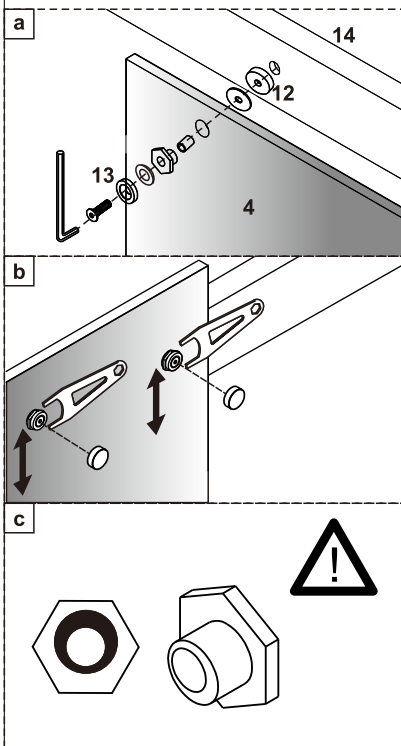


Wedge spacer is to put under glass door for level only if necessary.

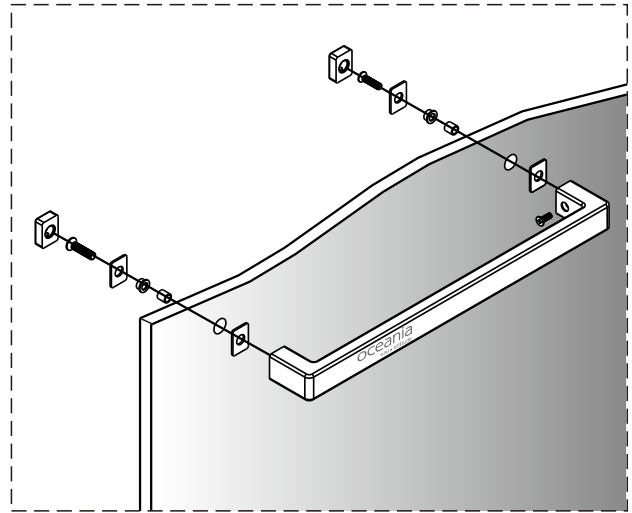
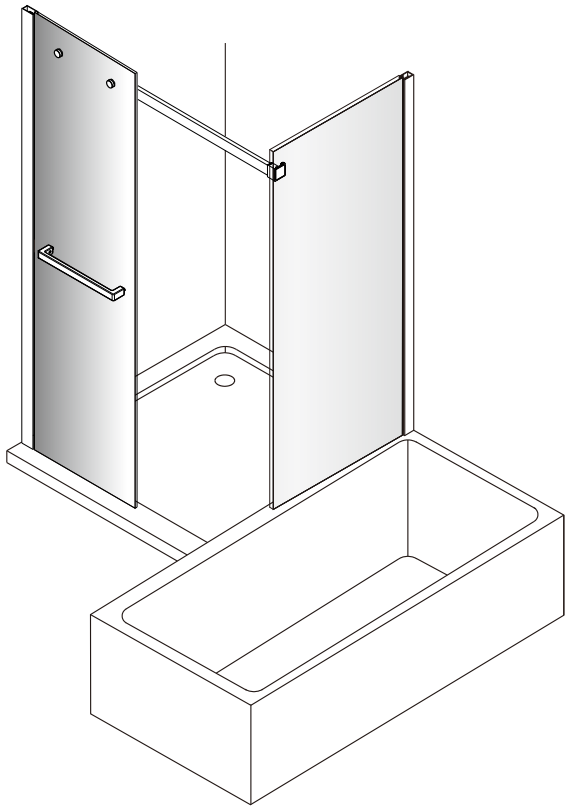


Les cales sous le verre servent à la mise à niveau et sont facultatifs.

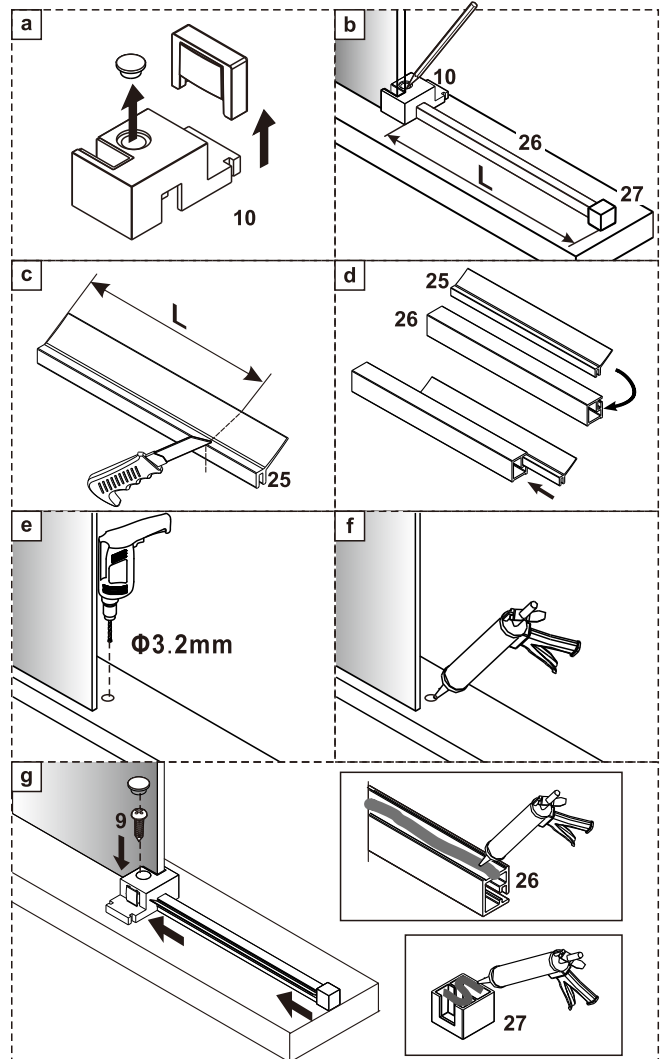
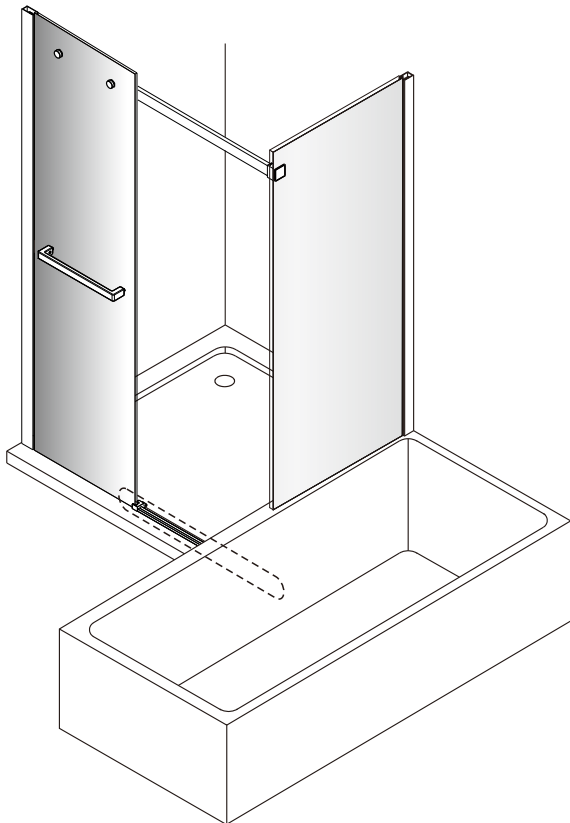
4



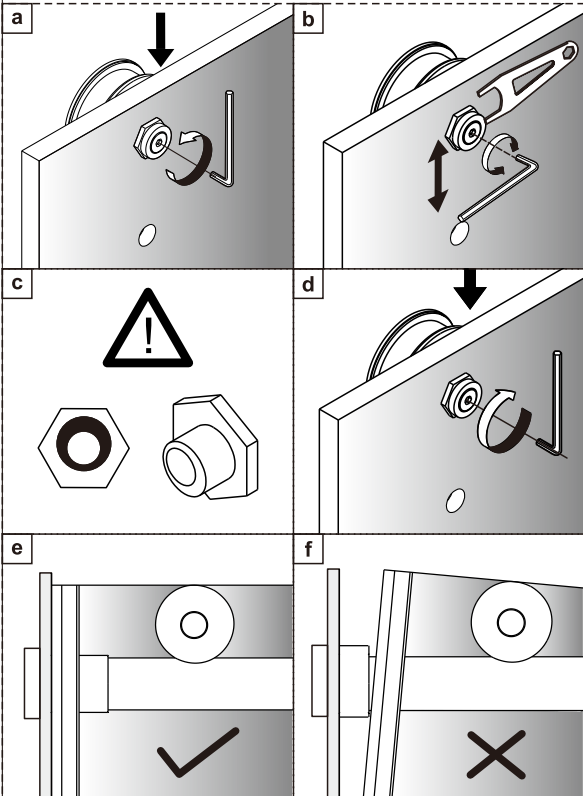
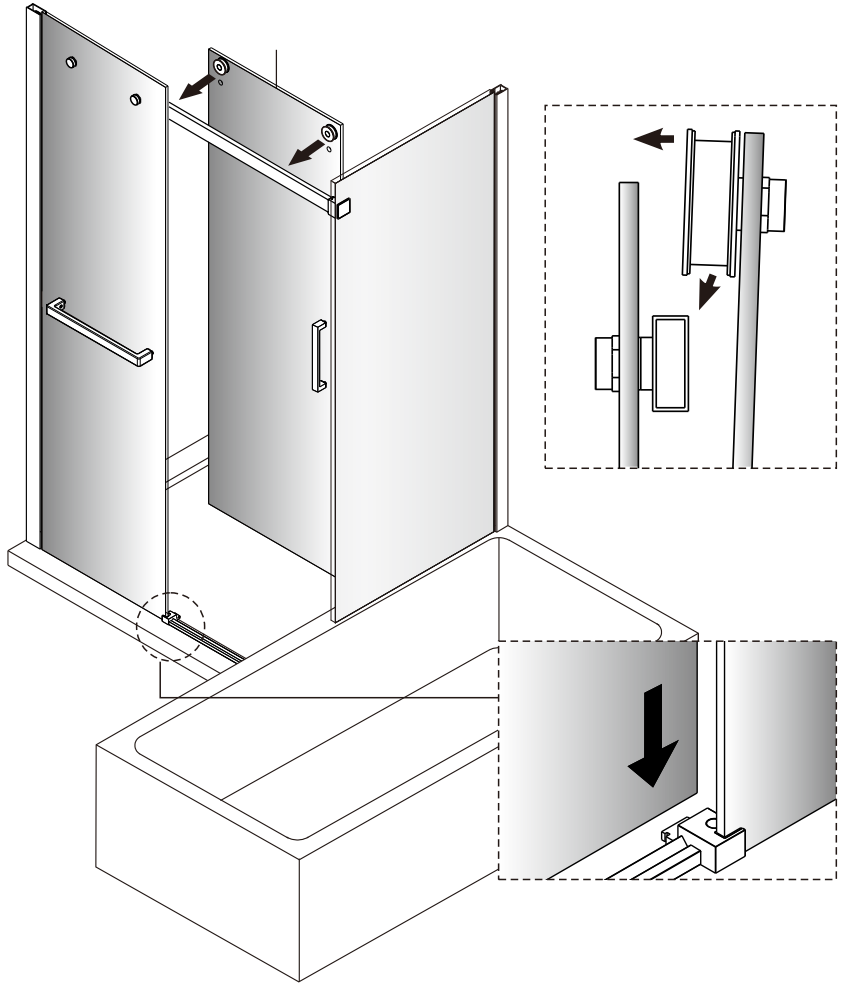
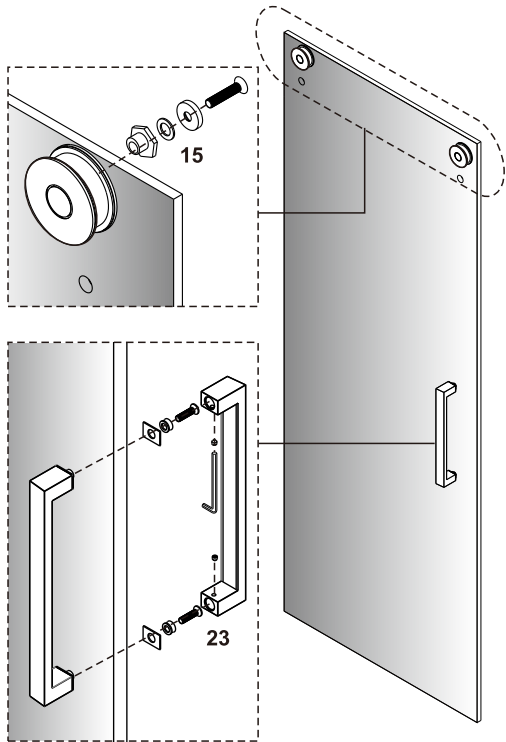
5



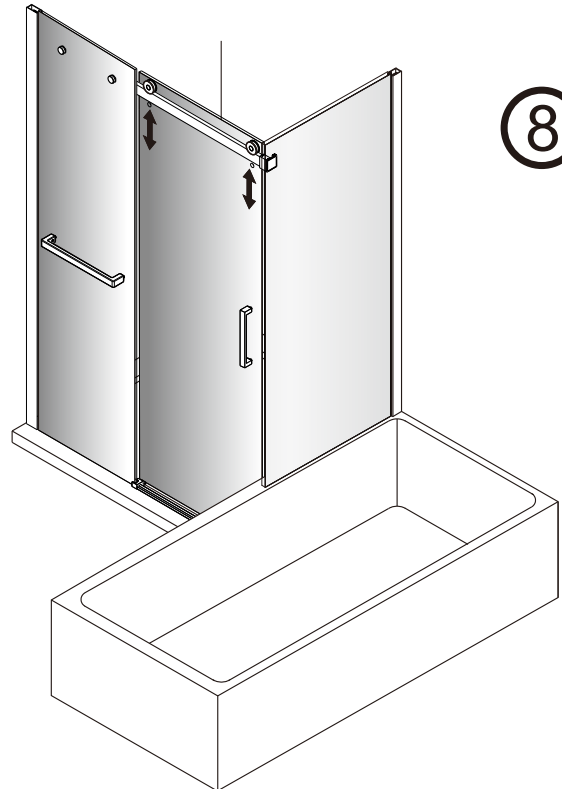
6

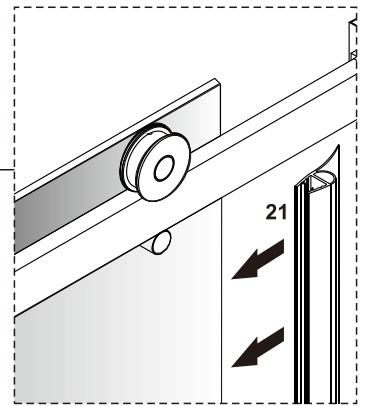
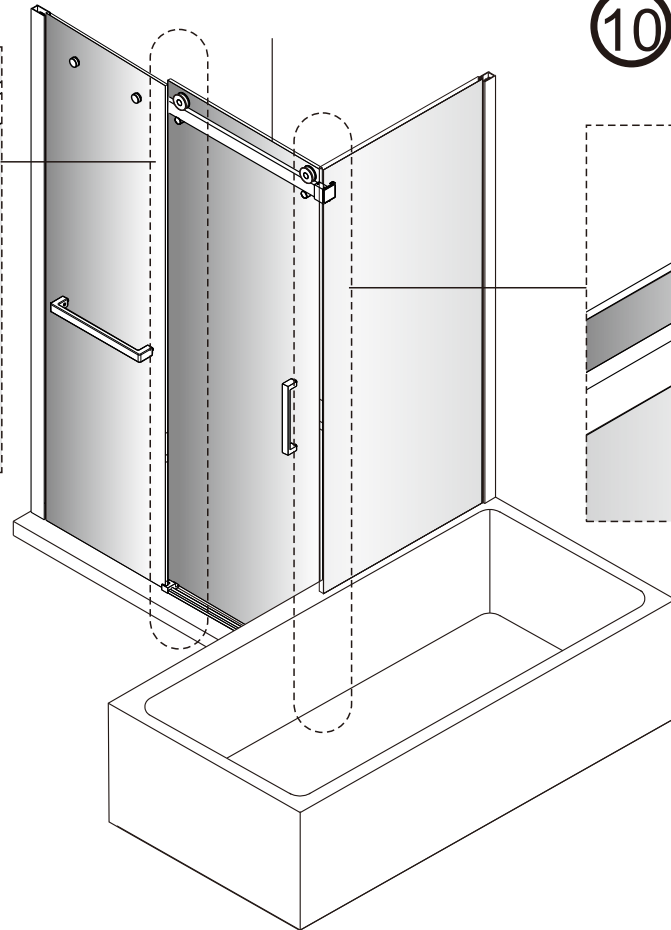
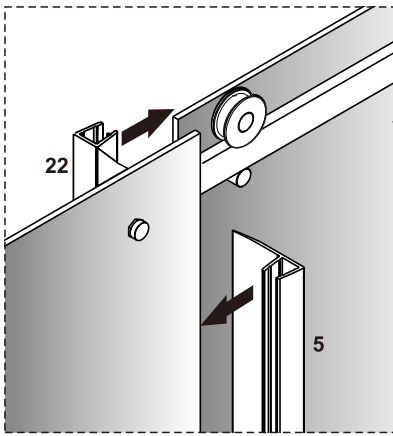
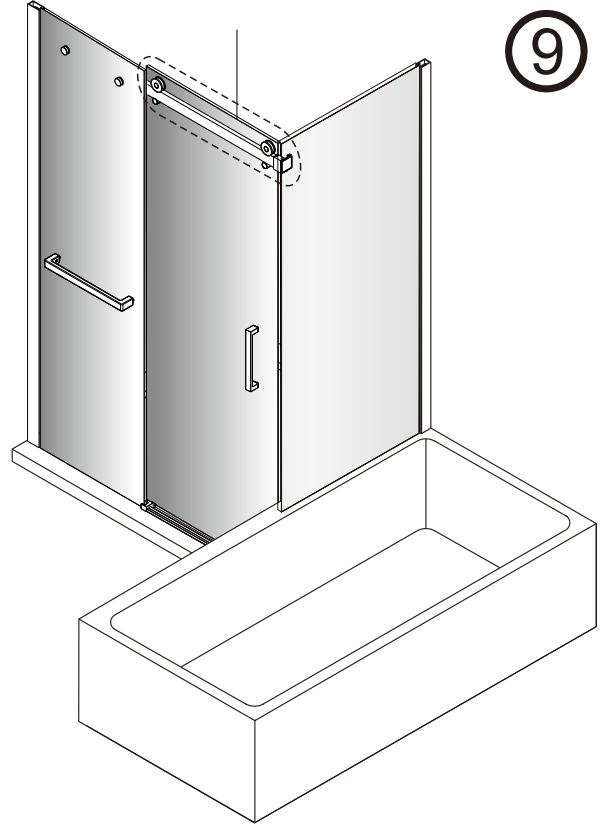
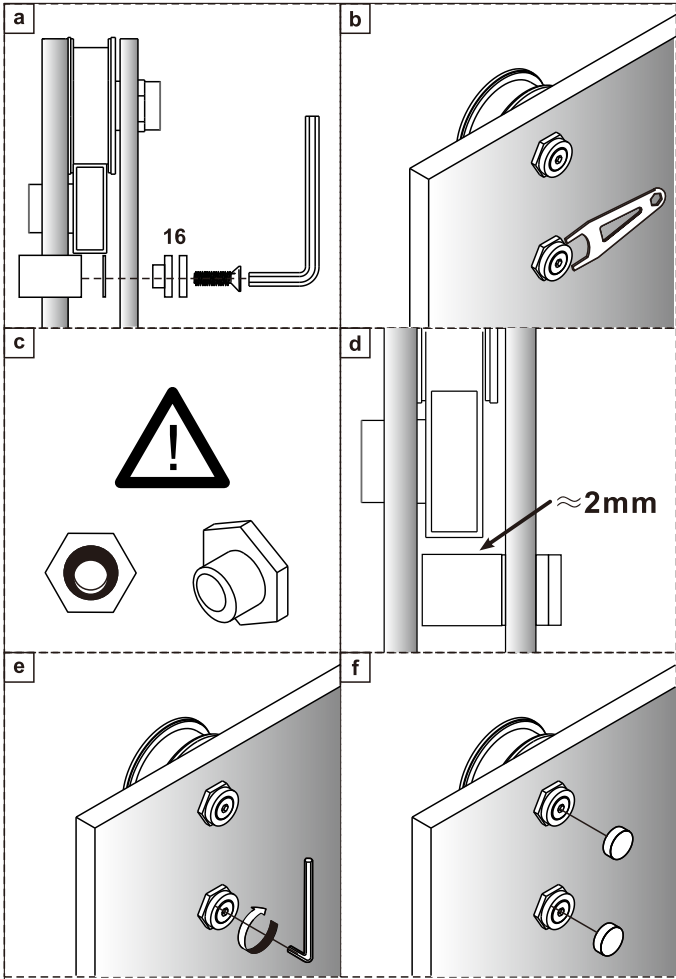


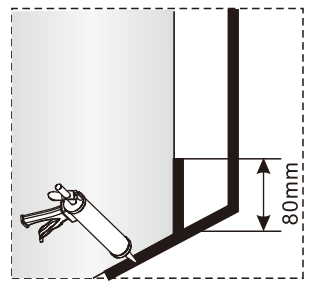
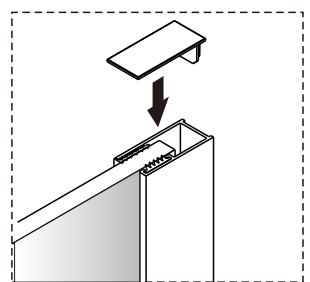
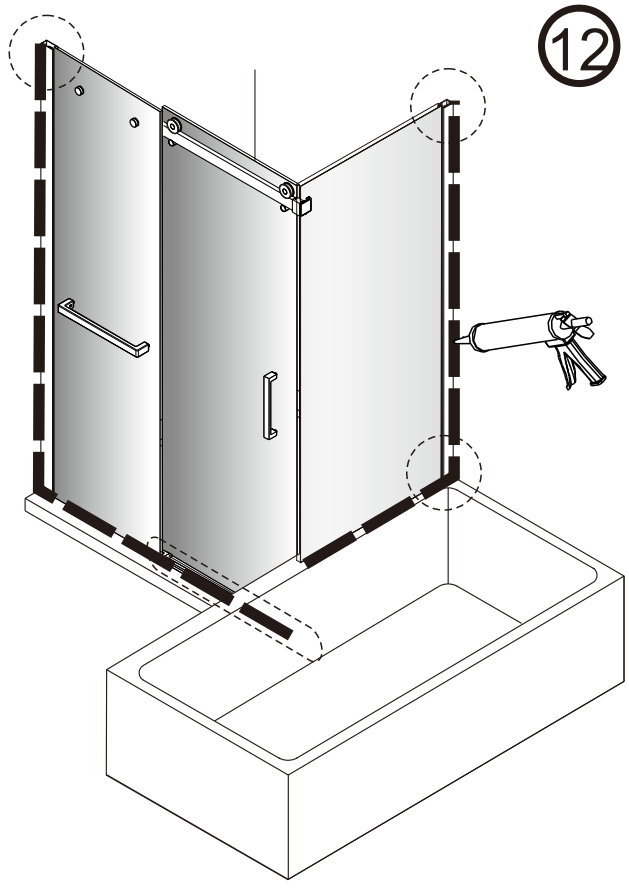
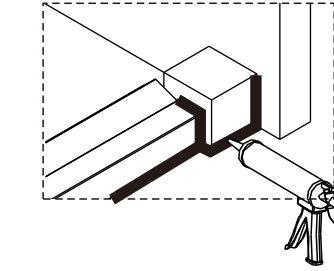
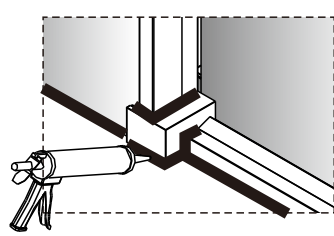
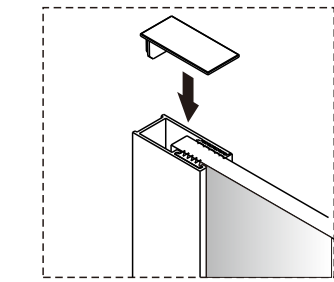
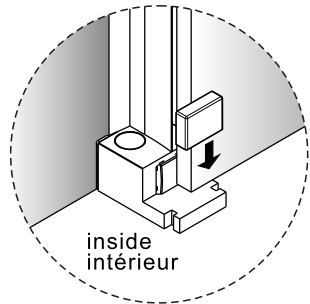
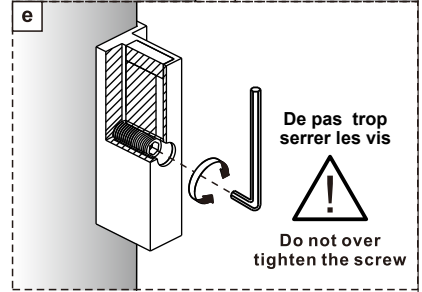
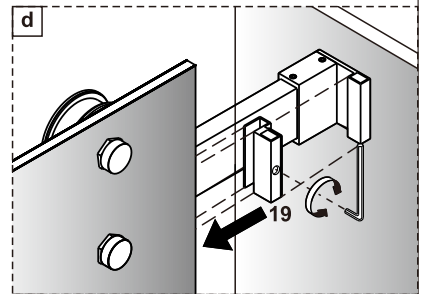
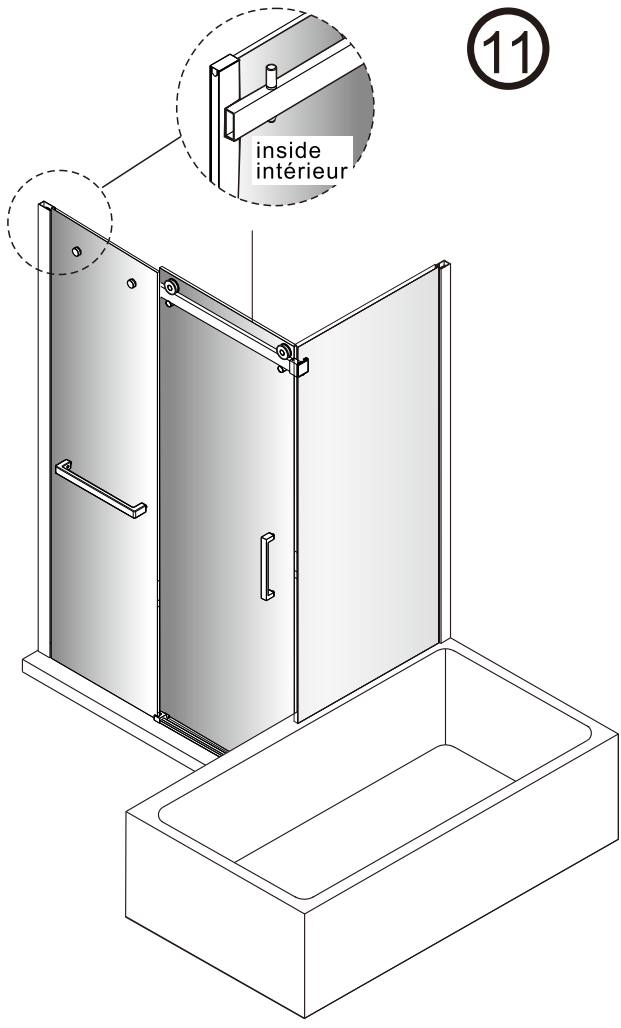
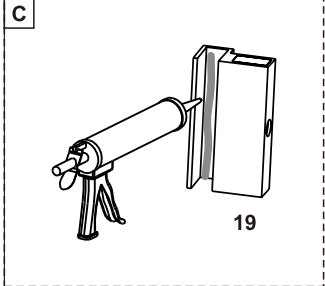
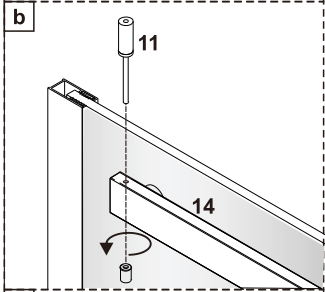
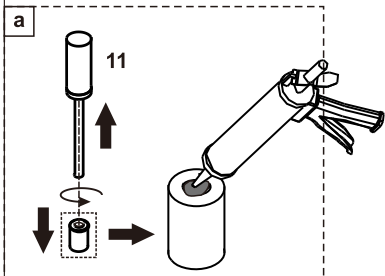
7



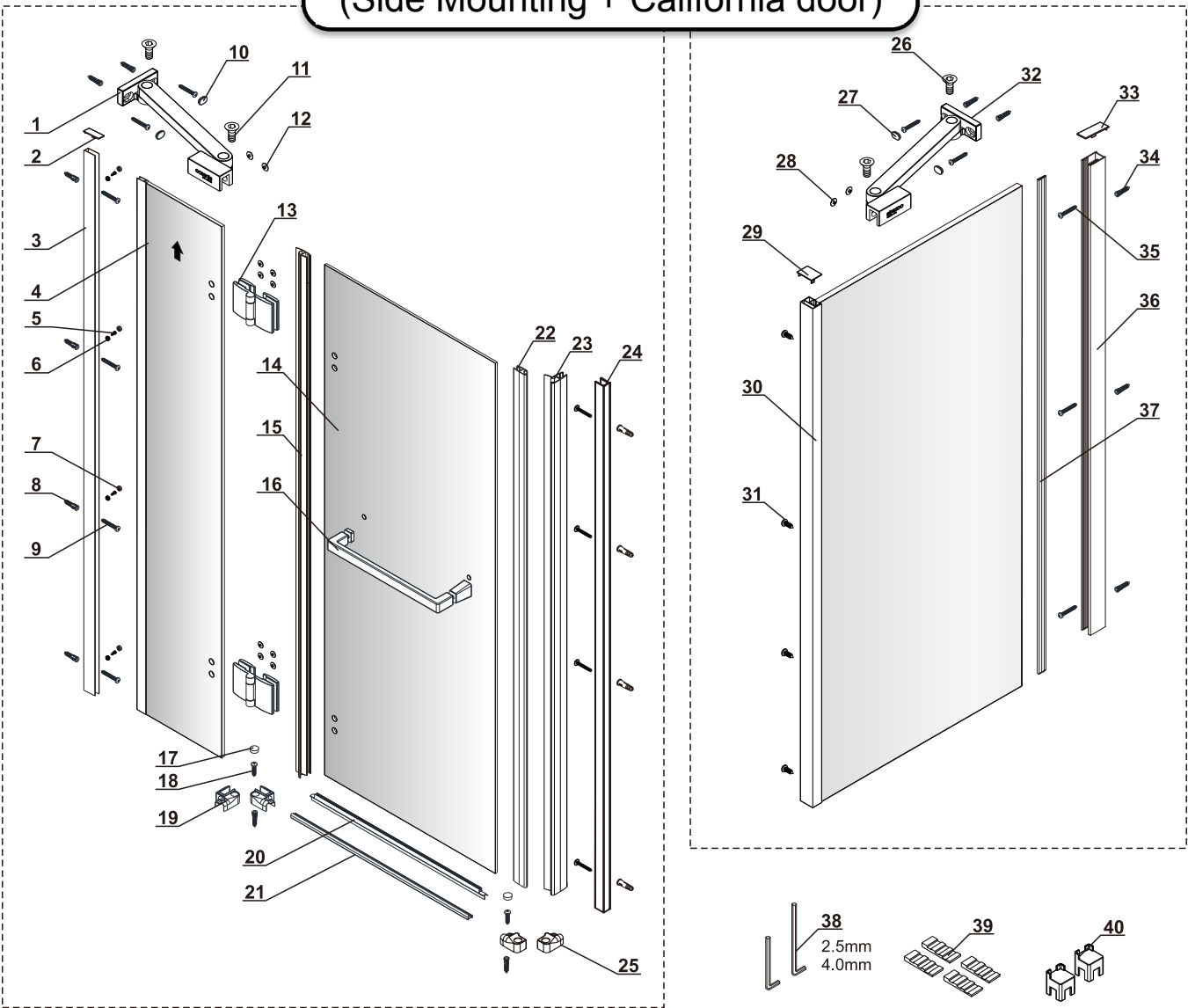
8



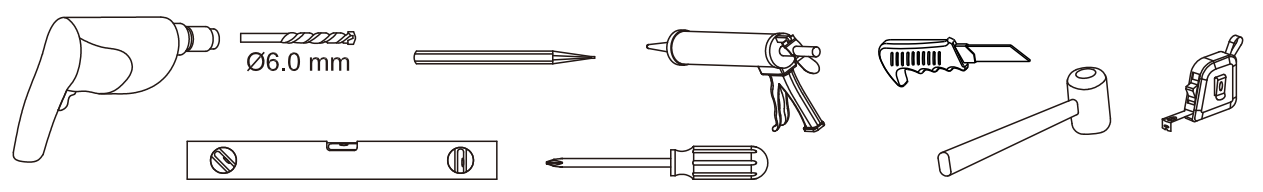




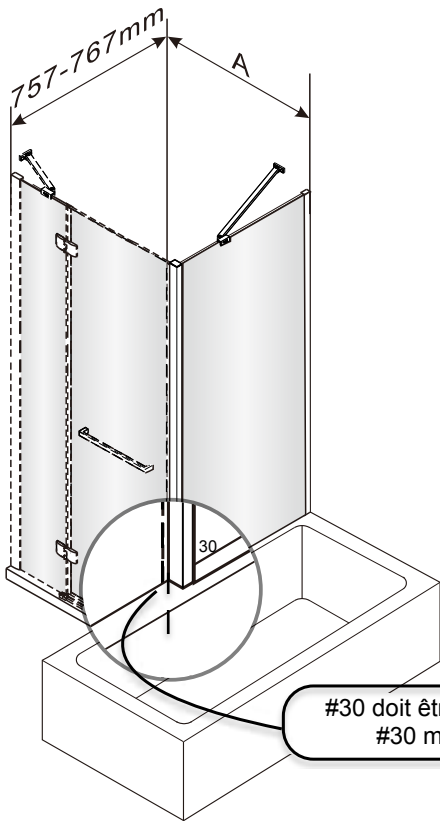
Montage de Côté + Porte California (Side Mounting + California door)



1 1X	2 1X	3 1X	4 1X	5 4X ST 4X13	6 4X	7 4X	8 12+1X	9 10+1X ST 4X40
10 2X	11 2X M6X16	12 10X	13 2X	14 1X	15 1X	16 1X	17 2X	18 2+1X ST 4X18
19 2X L/R	20 1X	21 1X	22 1X	23 1X	24 1X	25 2X L/R	26 2X M6X16	27 2X
28 2X	29 1X	30 1X	31 4+1X ST 4X13	32 1X	33 1X	34 7+1X	35 7+1X ST 4X40	36 1X
37 1X	38 2X	39 4X	40 2X					



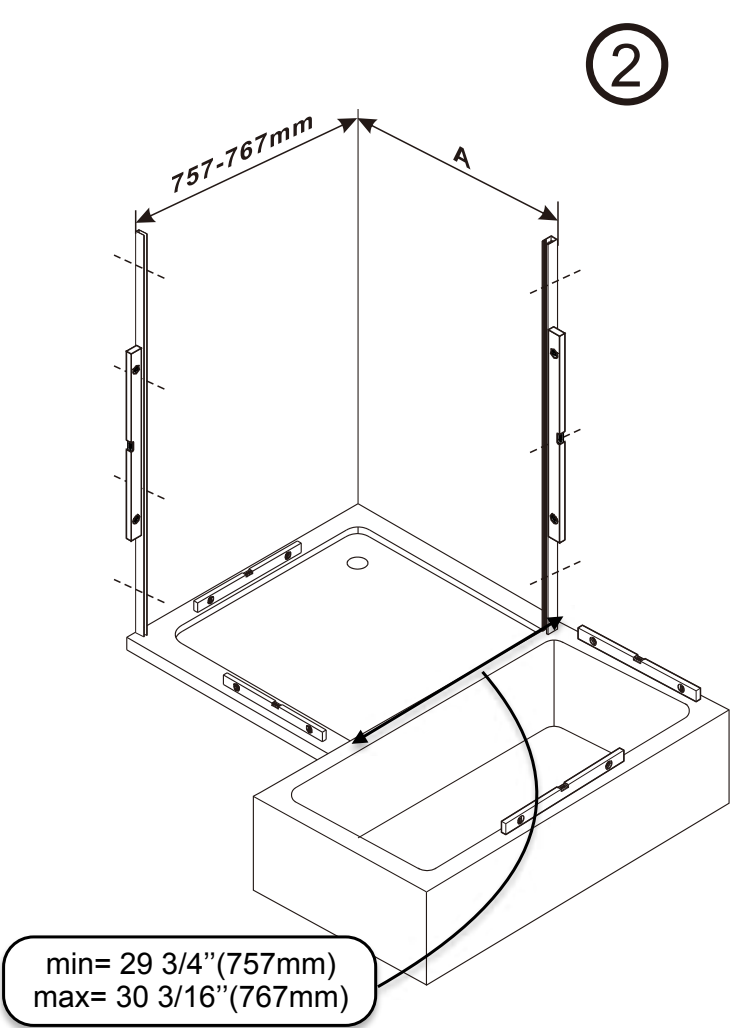
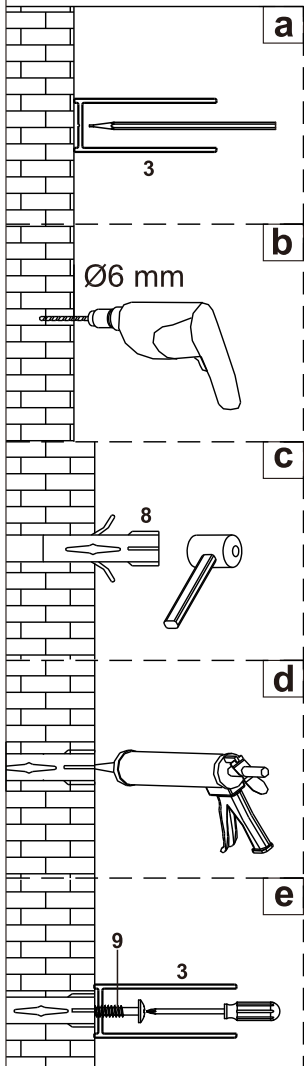
1



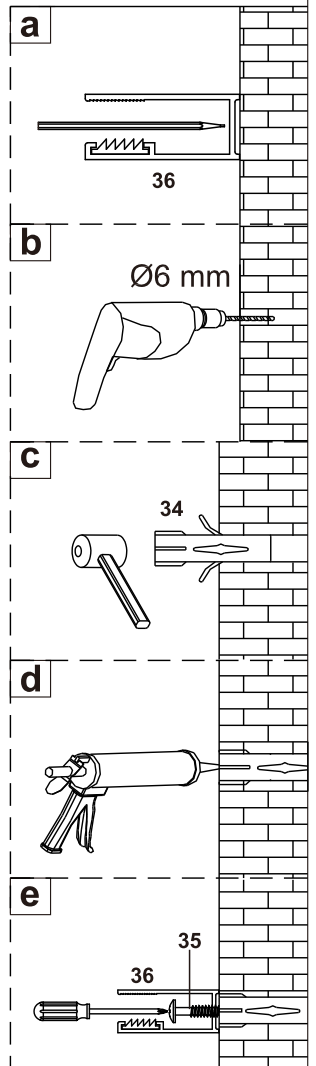
model	A(mm)		A(")	
	min	max	min	max
36"	852.8	872.8	33 5/8	34 3/8
42"	1005.8	1025.8	39 5/8	40 3/8
48"	1157.8	1177.8	45 5/8	46 3/8
60"	1462.8	1482.8	57 5/8	58 3/8

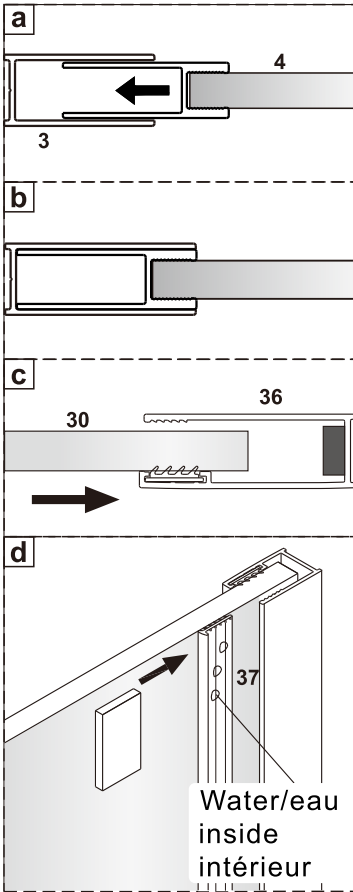
#30 doit être positionné égal à la jupe du bain
 #30 must be flush with the bath skirt

2

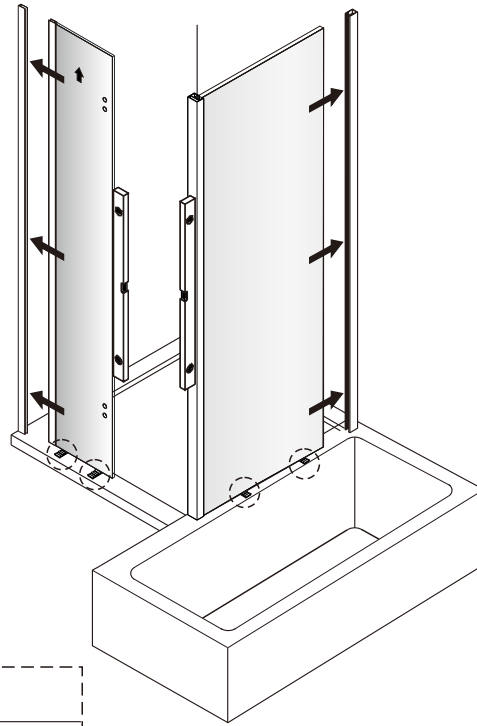


min= 29 3/4"(757mm)
 max= 30 3/16"(767mm)

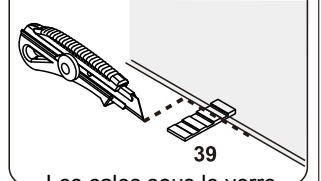
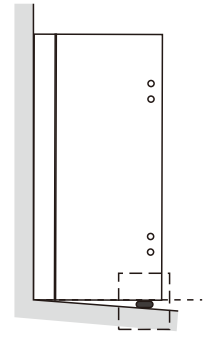




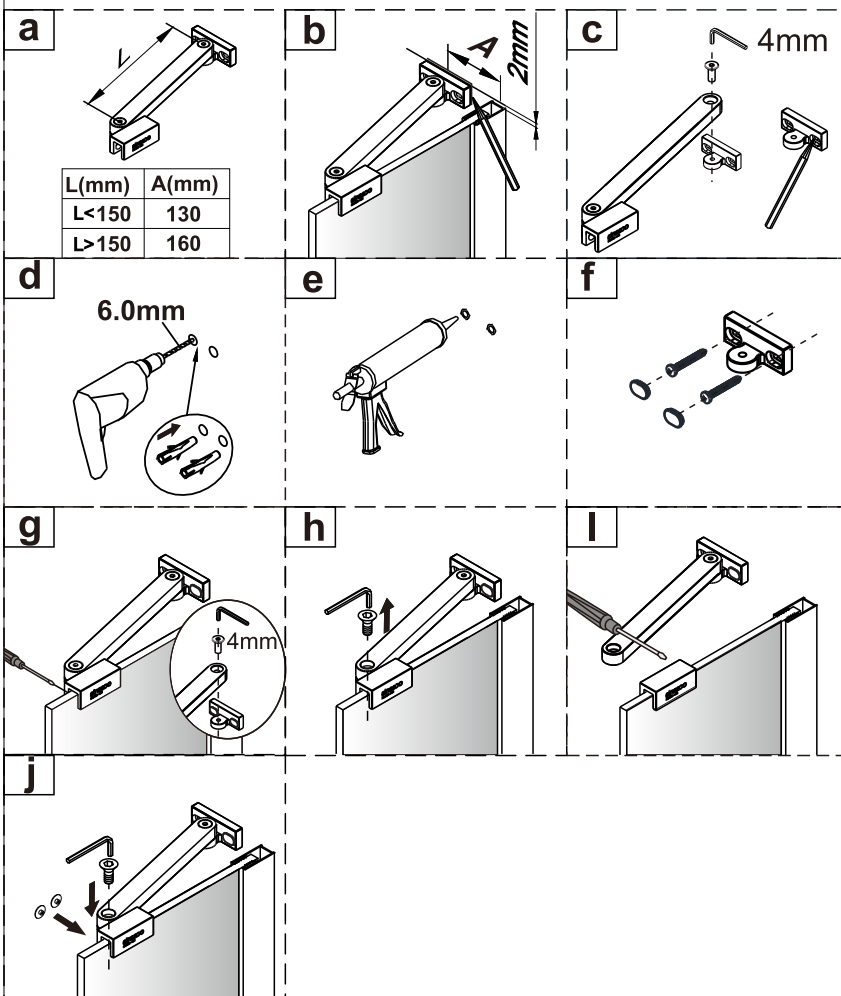
3



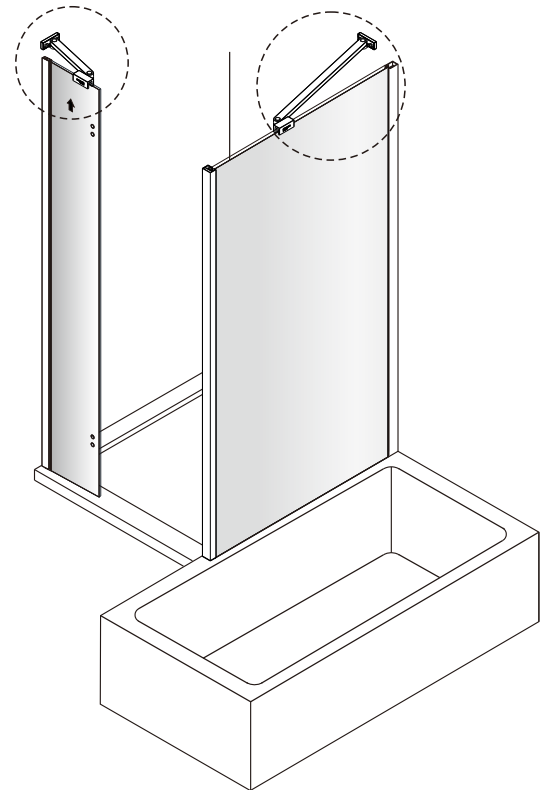
Wedge spacer is to put under glass door for level only if necessary.

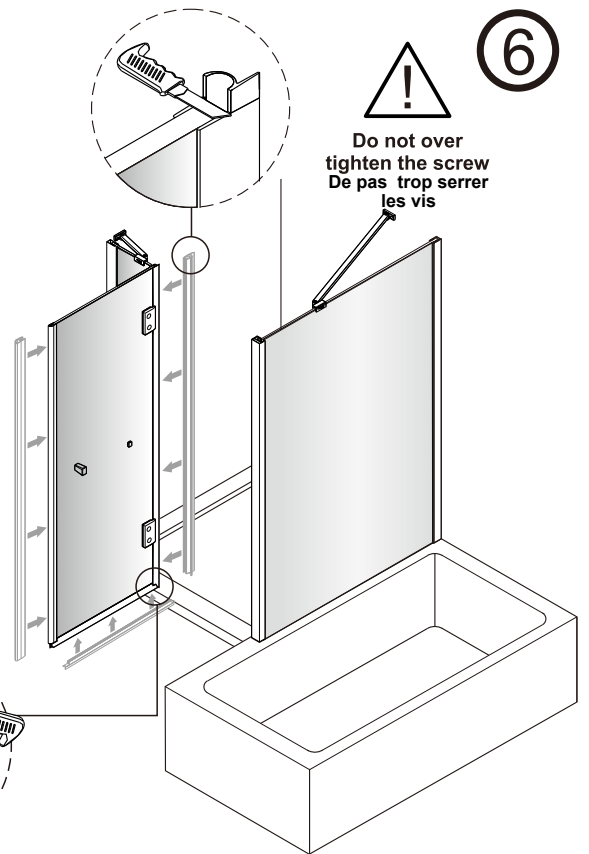
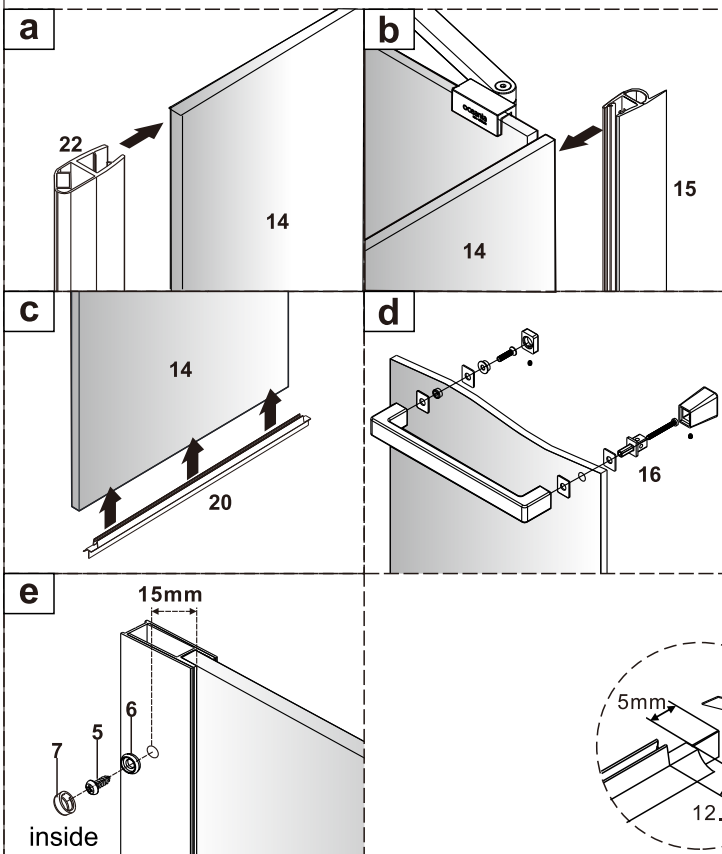
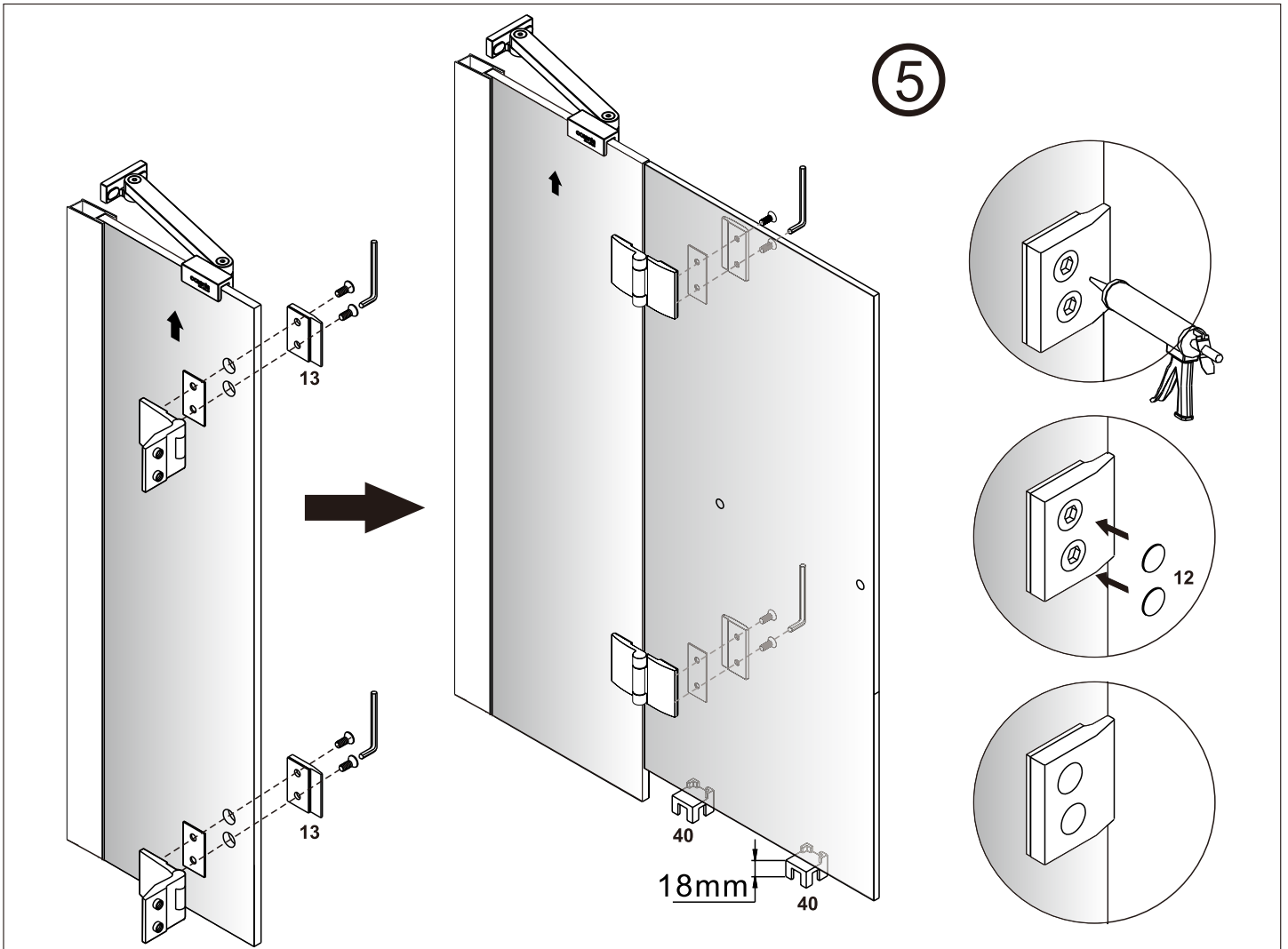


Les cales sous le verre servent à la mise à niveau et sont facultatifs.

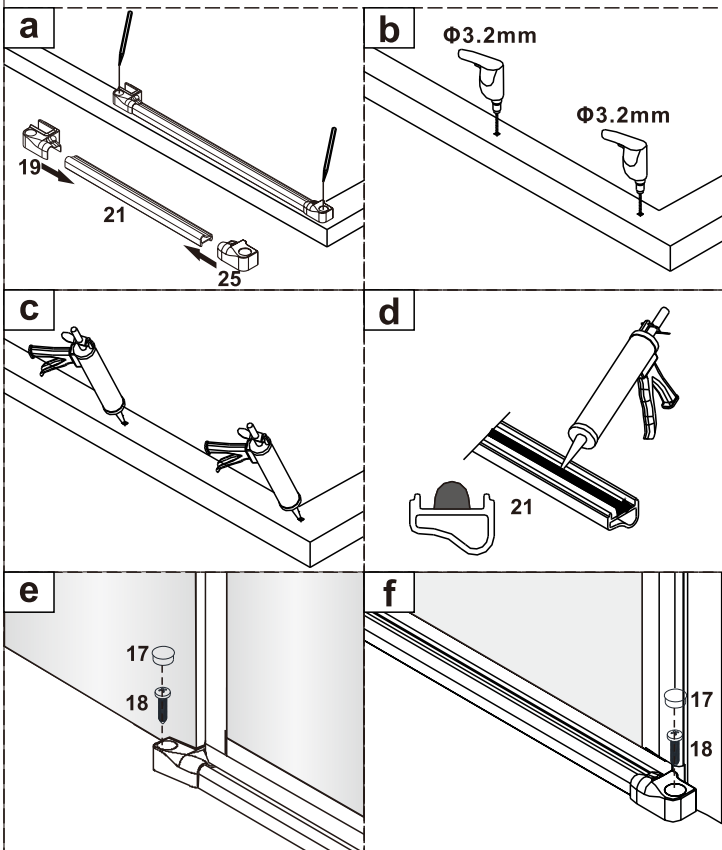
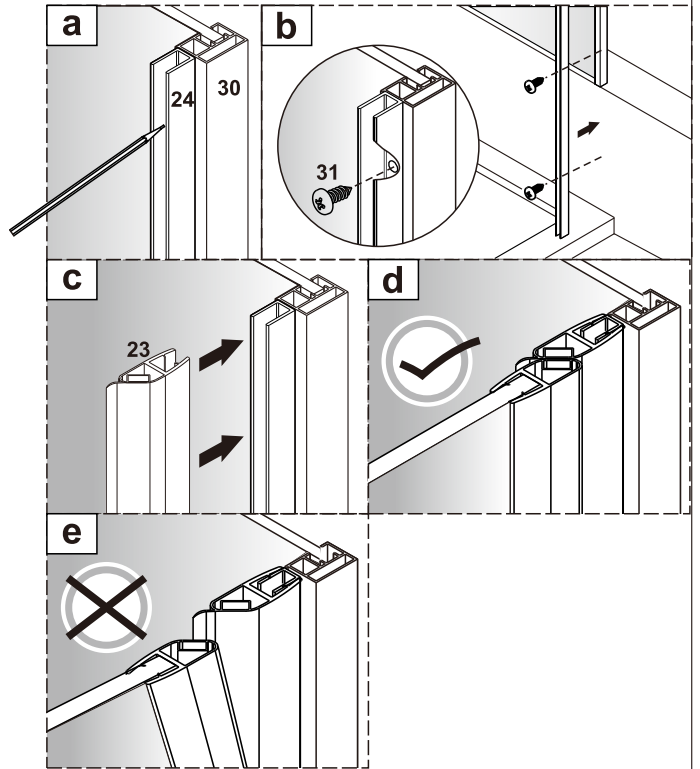
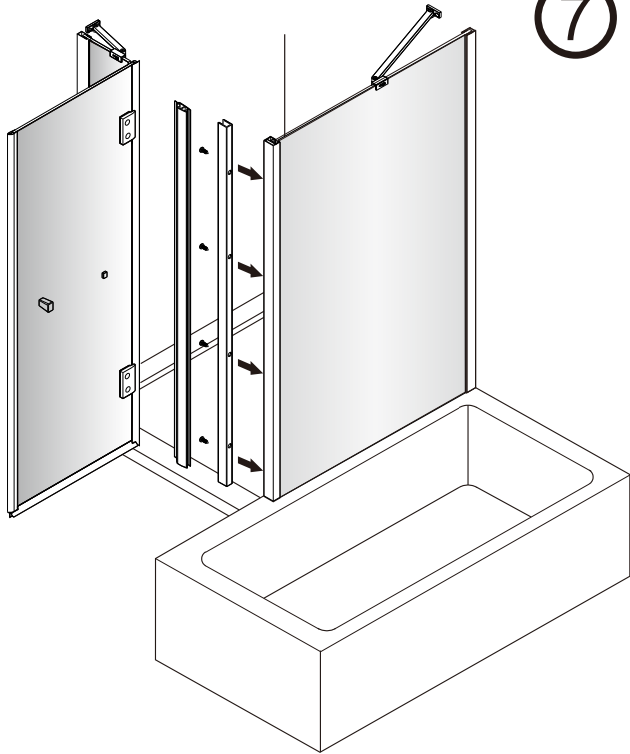


4

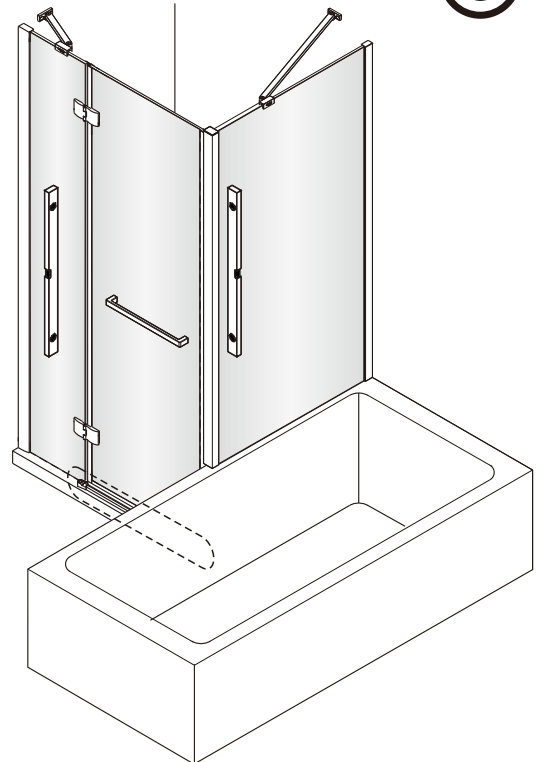


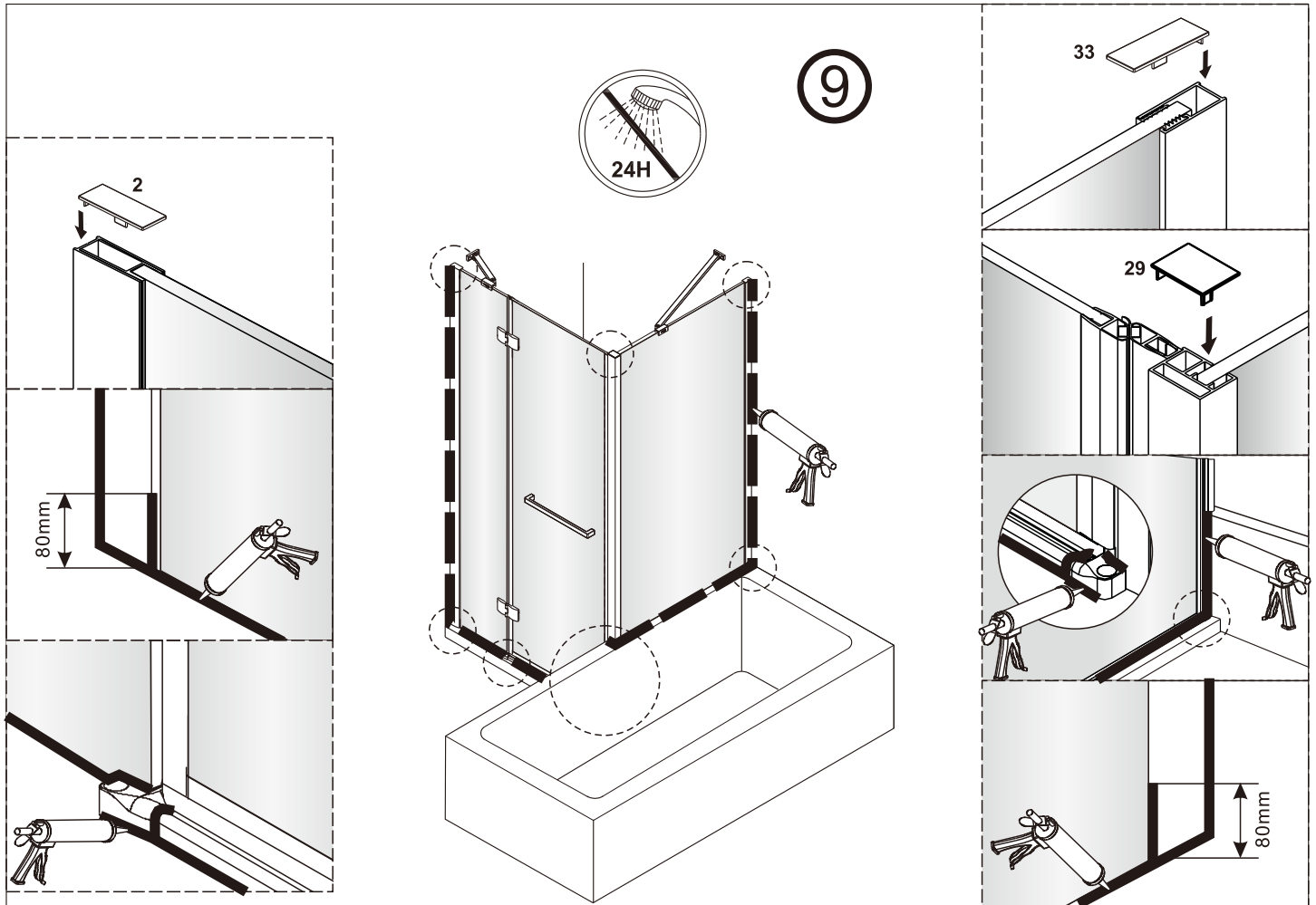


7



8





For more details on technical informations, please go to the website on www.oceaniabaths.com
Pour plus de détails sur les informations techniques, visiter notre site web au www.bainsoceania.com