

Installation Procedure for Freestanding Bathtub with Aeromassage Air System and Chromatherapy



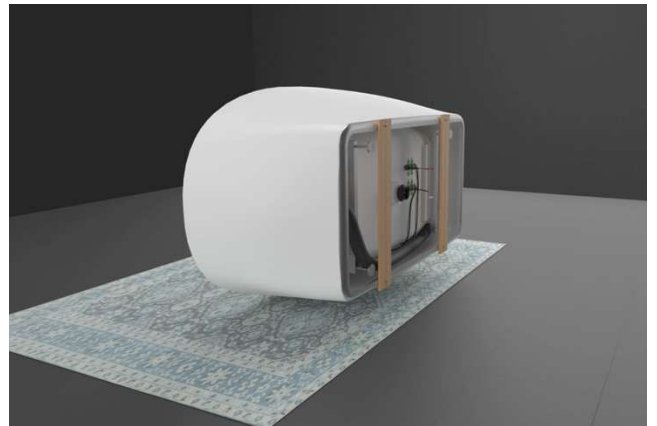
- For Warranty, please refer to our website: <http://www.oceania-attitude.com>
- The structure supporting your bathtub must hold a minimum of 1200 pounds (545 kg)

1. Perform a thorough inspection of your bathtub.

In case of error, discrepancy, or any anomaly, promptly contact Oceania customer service at 1-877-332-4224.



2. Gently place the bathtub on its side, ensuring to lay a carpet, cardboard, or any other protective surface underneath to prevent damaging the bathtub.

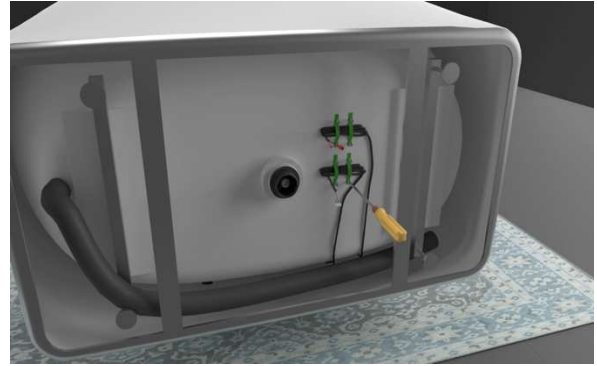


oceania

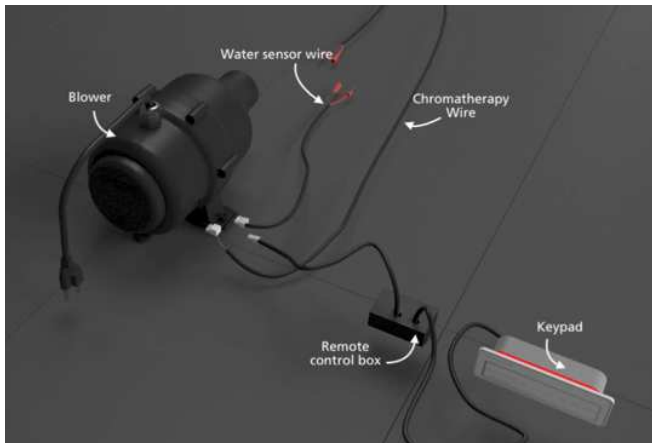
3. Remove the support beneath the bath.



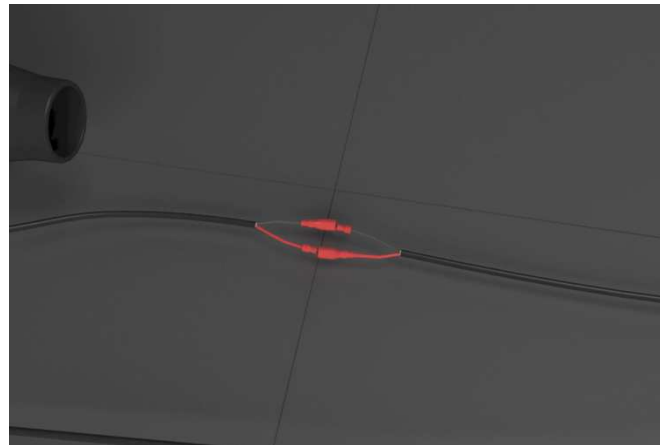
4. Release the wires.



5. Proceed with the connections of the components as illustrated.



6. Connect the 2 sections of the water sensor wire. Align identical colors together.



7. Connect the blower to a GFI 120-volt/15 amp electrical outlet.



8. Synchronize the remote control by pressing buttons 2 and 3 on the remote within 15 seconds of plugging to the electrical outlet. Hold both buttons for 5 seconds.

IMPORTANT : Once this is done, verify the proper functioning of each button before continuing.

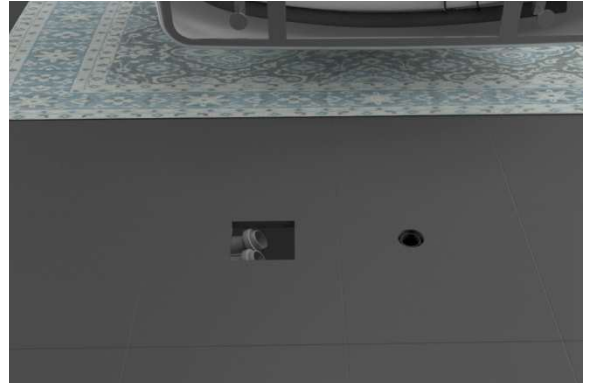


oceania

9. Adjust the legs so that the bathtub is perfectly level. It is the responsibility of the installer to ensure proper drainage of the bath.



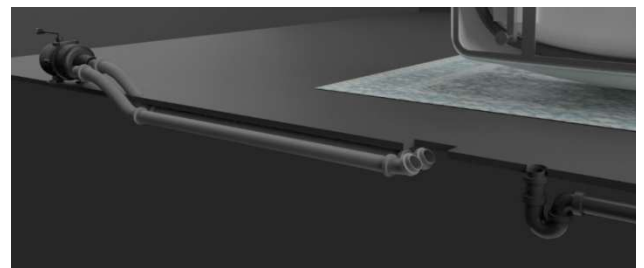
10. Mark the location of the drain, then make openings in the floor to accommodate the pipes for the drain, hot air, and connections to the blower.



11. Choose a nearby location for the blower placement. This location should be heated, well-ventilated, free of debris, easily accessible, and within a maximum of 12 feet from the bathtub (e.g., closet, vanity). However, closer is ideal.



12. Run 2 ABS or PVC 1 ½" pipes under the floor between the blower and the bathtub.



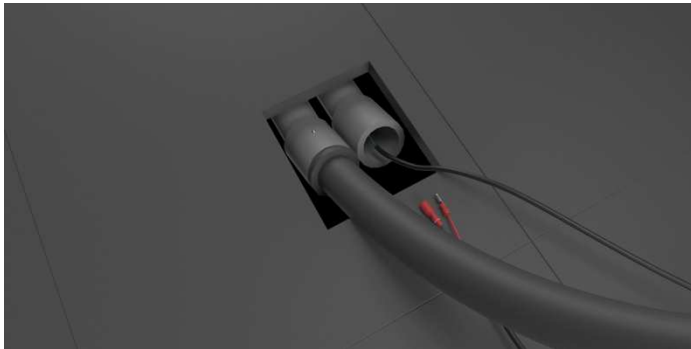
13. Proceed with the installation of the drain.



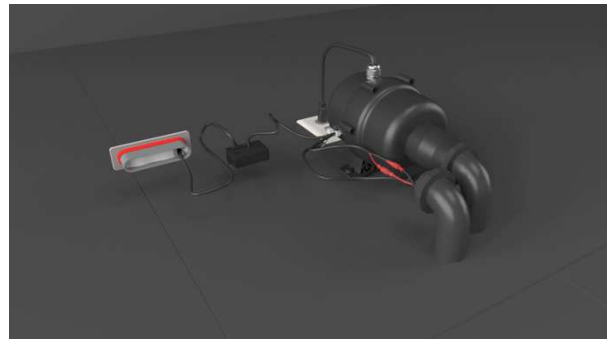
14. Connect the flexible hose of the bathtub to the 1 ½" pipe leading to the blower.



15. Pass the chromotherapy wire and the water sensor wire through the second pipe to bring them to the blower location.



16. At the location of the blower, proceed with the final connections and connect the blower's air outlet using 1 ½" pipe.



17. Apply silicone under the bathtub feet.



18. Connect the drain according to the plumbing and/or building code applicable in your region.

Note: If you are using a freestanding bathtub drain adapter (FBQD), refer to its installation instructions.



oceania

19. Fill the bathtub with water and ensure the proper functioning of all components.

