

REMOTE BLOWER INSTALLATION

If you need to relocate the blower follow these instructions. Failure to follow these instructions could result in serious personal injury or and/or property damage. Failure to follow these instructions will void the warranty. Oceania Baths can not be responsible for any damage, loss, cost, expense or liability relating to failure to follow these instructions.

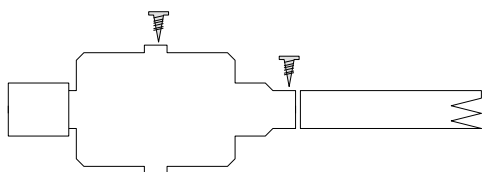
LOCATION:

Choose a location not requiring more than 12 ft. (3.66 m) of piping. Limit the number of 90° elbows to 2. If there are more than 2 turns, use 45° elbows for all directional changes, limit directional changes to a minimum. Choose the shortest possible distance between bath and blower to maintain the system's performance. Sufficient space and ventilation are necessary around the blower for proper air circulation.

NOTE: Ambient air temperature should be between 72°F (20°C) and 86°F (30°C). Easy access to blower must always remain possible for servicing.

BLOWER INSTALLATION:

Blower may be relocated in either a vertical or a horizontal position. Use only 1 1/2" (3.8 cm) ABS or PVC non-flexible pipes and adaptors to extend air line; the use of flexible pipes is not recommended (except when factory installed). Whenever possible, use



two 45° elbows to change the direction of your piping. All air line pipe connections should be glued together except for the connection to the blower which is secured in place with a screw (fig 1).

The blower must be mounted at least 4" (10 cm) from the floor. Your bath is delivered with a 12 ft. (3 m) cord to connect the electronic keypad and water detectors to the blower.

FOLLOW THESE STEPS:

- 1) Turnoff power supply to the bathtub. DANGER-make certain that all power to the bathtub has been turned off. Try turning on the blower to make certain that it does not start up.
- 2) Disconnect power supply to the blower. Unplug the keypad wire and the water detector wire from the blower.
- 3) With a screwdriver remove the screw holding the 1 1/2" ABS pipe to the blower and the screw holding the blower to the bathtub.
- 4) Move the blower to its new position and fasten with 2 screws.
- 5) Reconnect the keypad wire and water detector wire to the blower.
- 6) Reconnect your power supply.
- 7) Turn on the blower with the keypad and test that all the buttons are working properly.
- 8) Install piping according to the blower installation instructions above. Do not glue the pipe to the blower. Use a screw to hold the pipe in place.

NOTE: It is possible to fish the wires in the newly installed pipe. Drill a hole 6" from the blower and 1" from the end under the bath. Pass the wires and close the holes with some silicone.

It is recommended not turning on the blower for 12 hours after the pipes have been glued together.